

# Bart Meyers

- Hans' student at University of Antwerp, Belgium
- Research area: modelling language engineering
  - Meta-modelling
  - Model transformation
- Evolution of modelling languages
  - Need to explicitly model semantics in the form of properties

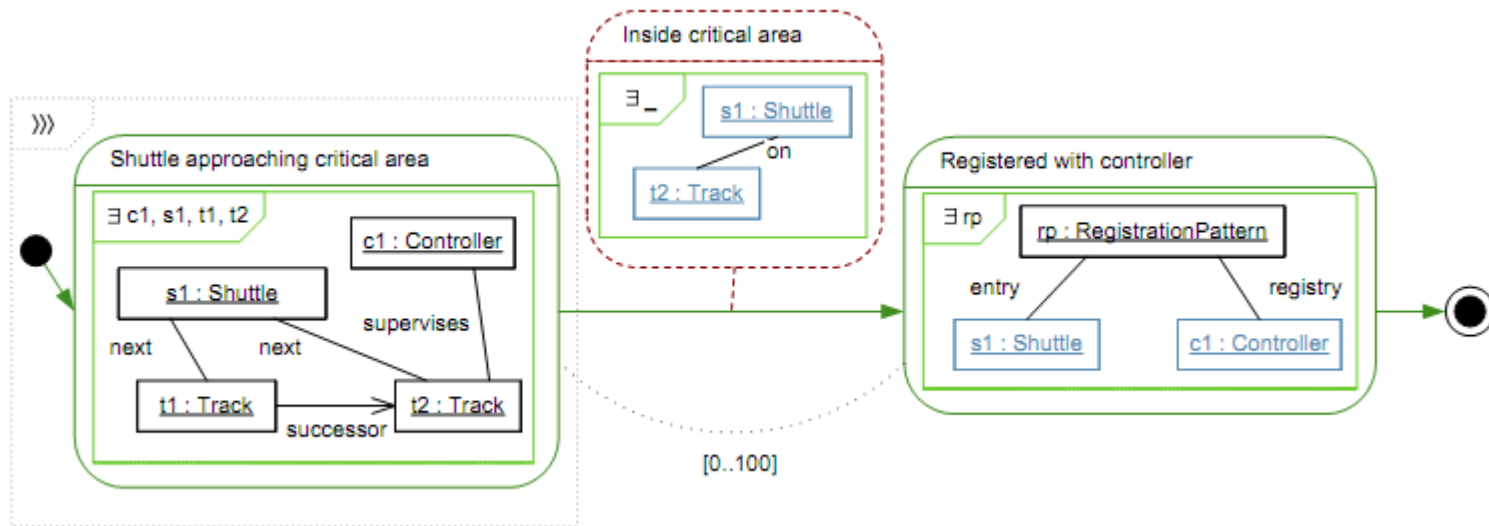
# Research interest

- Properties for domain-specific visual modelling languages
- Temporal properties (over structural properties)
- Expressed itself in a properties DSL
  - That looks like the modelling DSL
  - Where generic language concepts are added, e.g., Assertion
  - By using patterns
- Generative techniques
- Traces DSL? I/O DSL?

# Focus

- Focus on behavioural languages that can be mapped to FSA?
- Focus on property languages that can be mapped to CTL?
- Work by Florian Klein and Holger Giese (context: UML)
- T-Core by Eugene Syriani (context: model transformations)
- Scope for this week: paper, collaboration

# Example



Visual Specification of Structural and Temporal Properties.  
Holger Giese and Florian Klein  
2006