

Modelling of Software Intensive Systems

Hans Vangheluwe

 **McGill**
School of Computer Science

 necsis

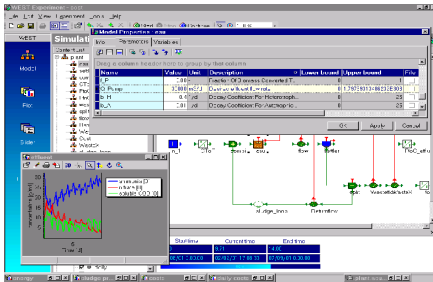
AnSyMo

 Universiteit
Antwerpen

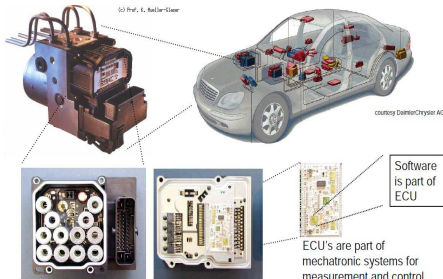
Department of Mathematics
and Computer Science

MSDL

Modelling, Simulation and Design Lab



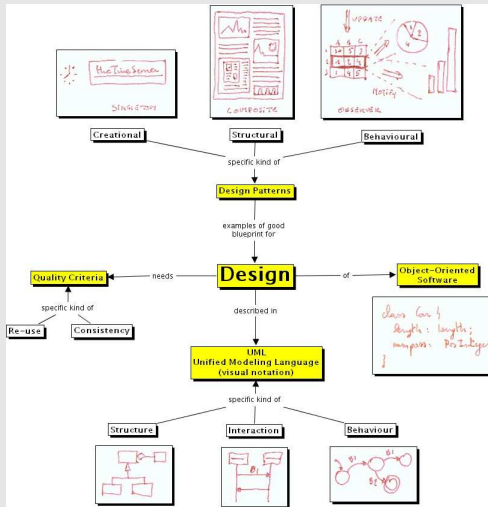
Google™



Complexity

- causes
- solution: different formalisms
- modelling dynamics: different notions of *time*

Modelling Formalisms: Software



Modelling Formalisms

- Causal Block Diagrams (alt. Ptolemy II)
- Automata and Regular Expressions
- Petri nets (alt. GPSS)
- Statecharts (alt. UPPAAL)
- DEVS
- (System Dynamics)
- (Modelica)