

Modelling of Software Intensive Systems

Hans Vangheluwe

 **McGill**
School of Computer Science

neCSIS

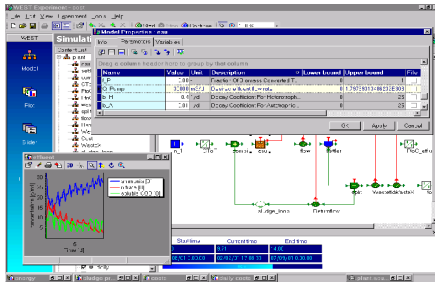
AnSyMo

 Universiteit
Antwerpen

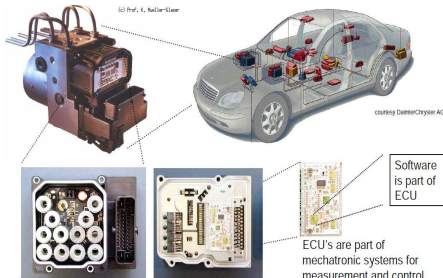
Department of Mathematics
and Computer Science

MSDL

Modelling, Simulation and Design Lab



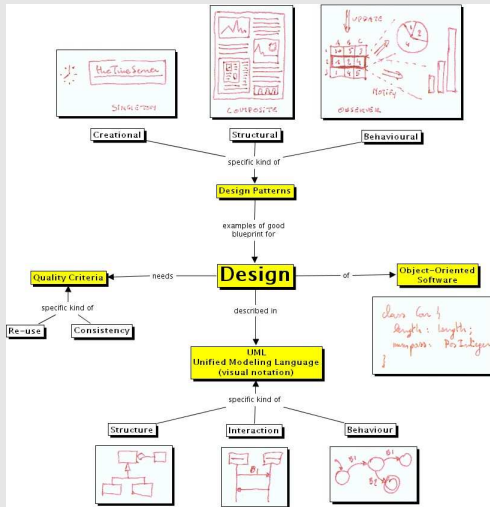
Google



Complexity

- causes
- solution: different formalisms
- modelling dynamics: different notions of *time*

Modelling Formalisms: Software



Modelling Formalisms

- Class Diagrams, Sequence Diagrams, Automata and Regular Expressions
- Causal Block Diagrams
- Petri nets
- Statecharts
- Discrete-Event World Views
- DEVS
- Cellular Automata
- Agent Based Modelling
- Forrester System Dynamics
- Modelling Physical Systems
- Systems Theory