



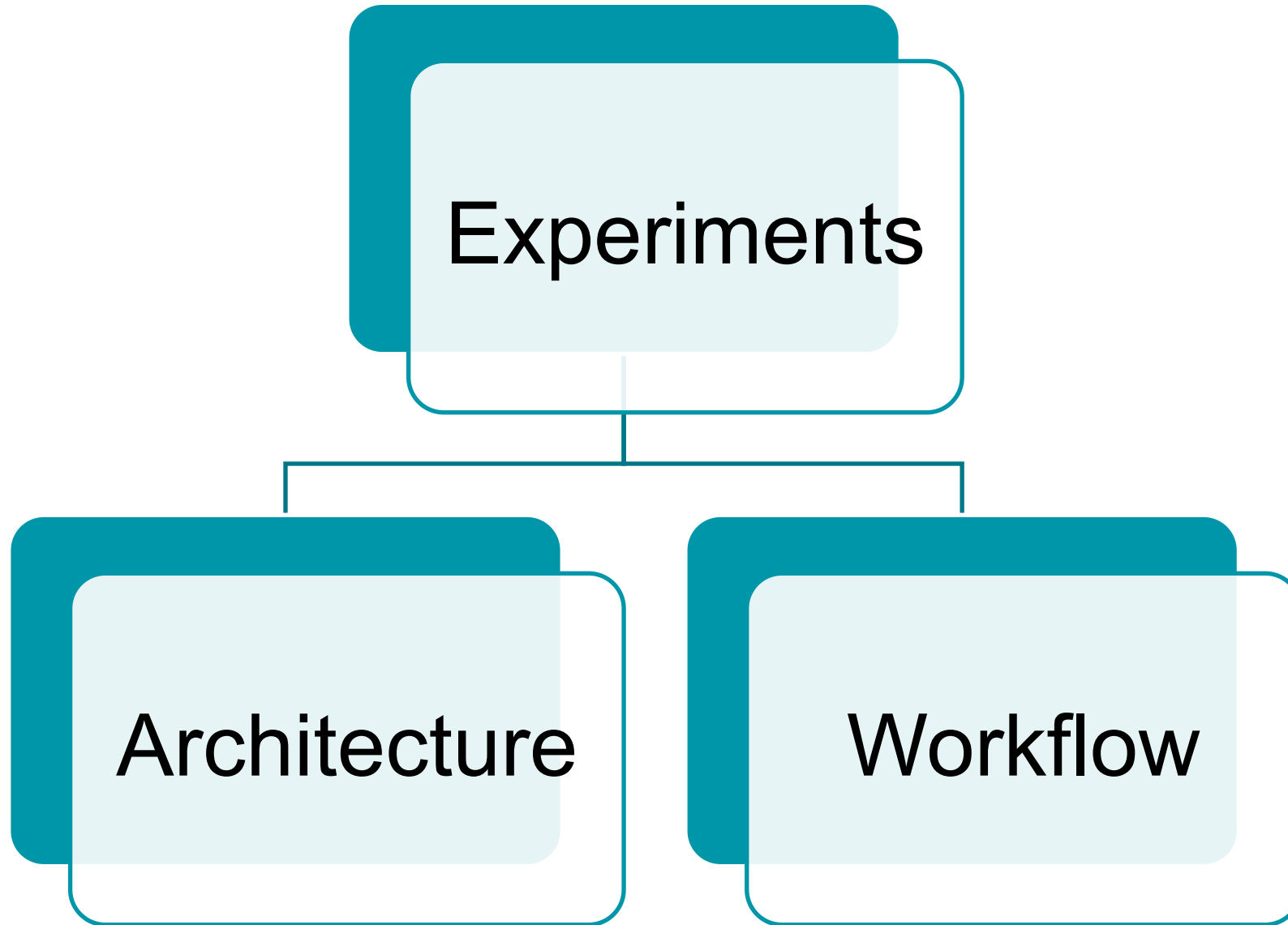
FLANDERS
MAKE

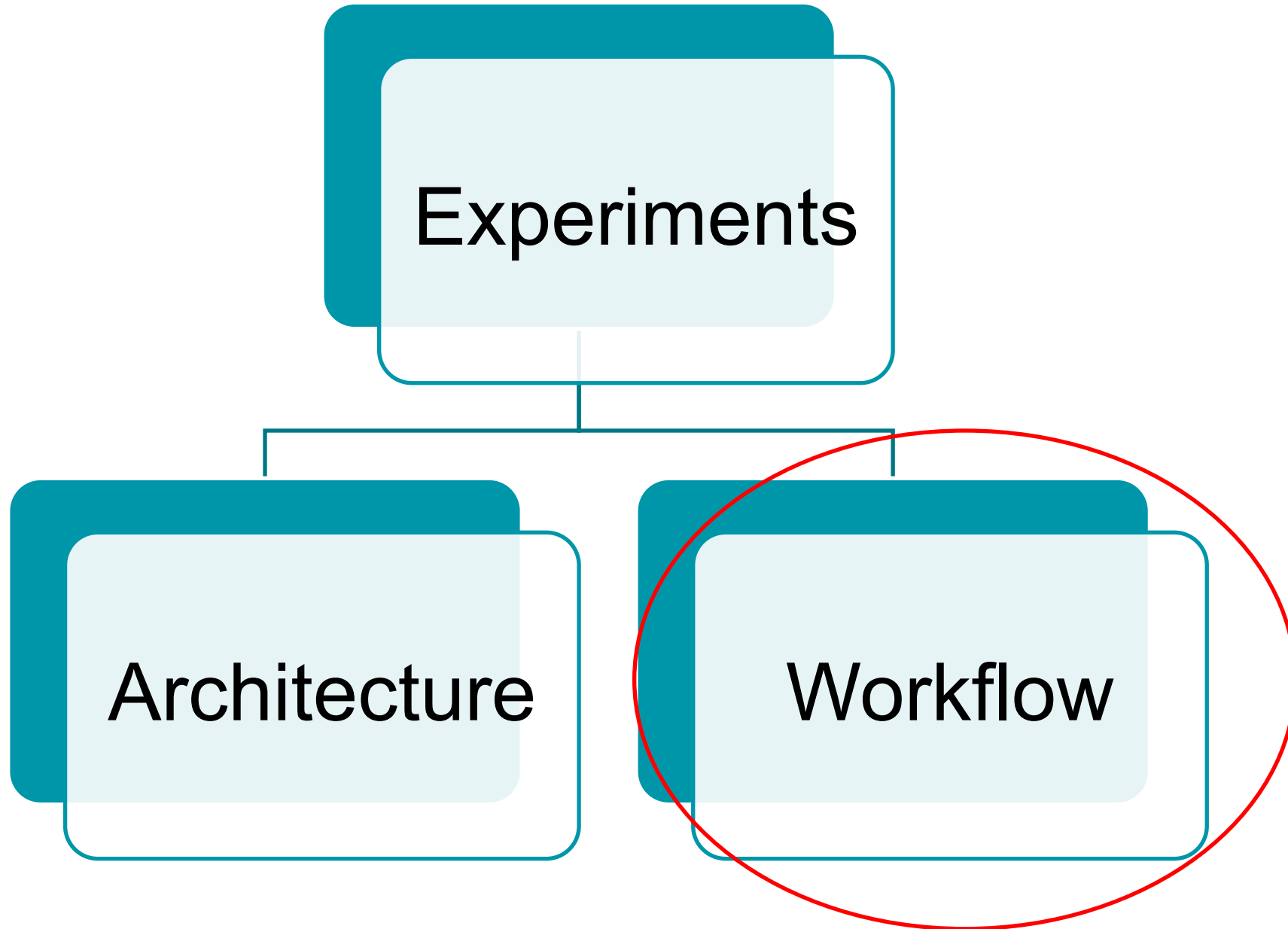
DRIVING INNOVATION IN MANUFACTURING

Experiment workflow management

Lucas Lima

23 November 2023





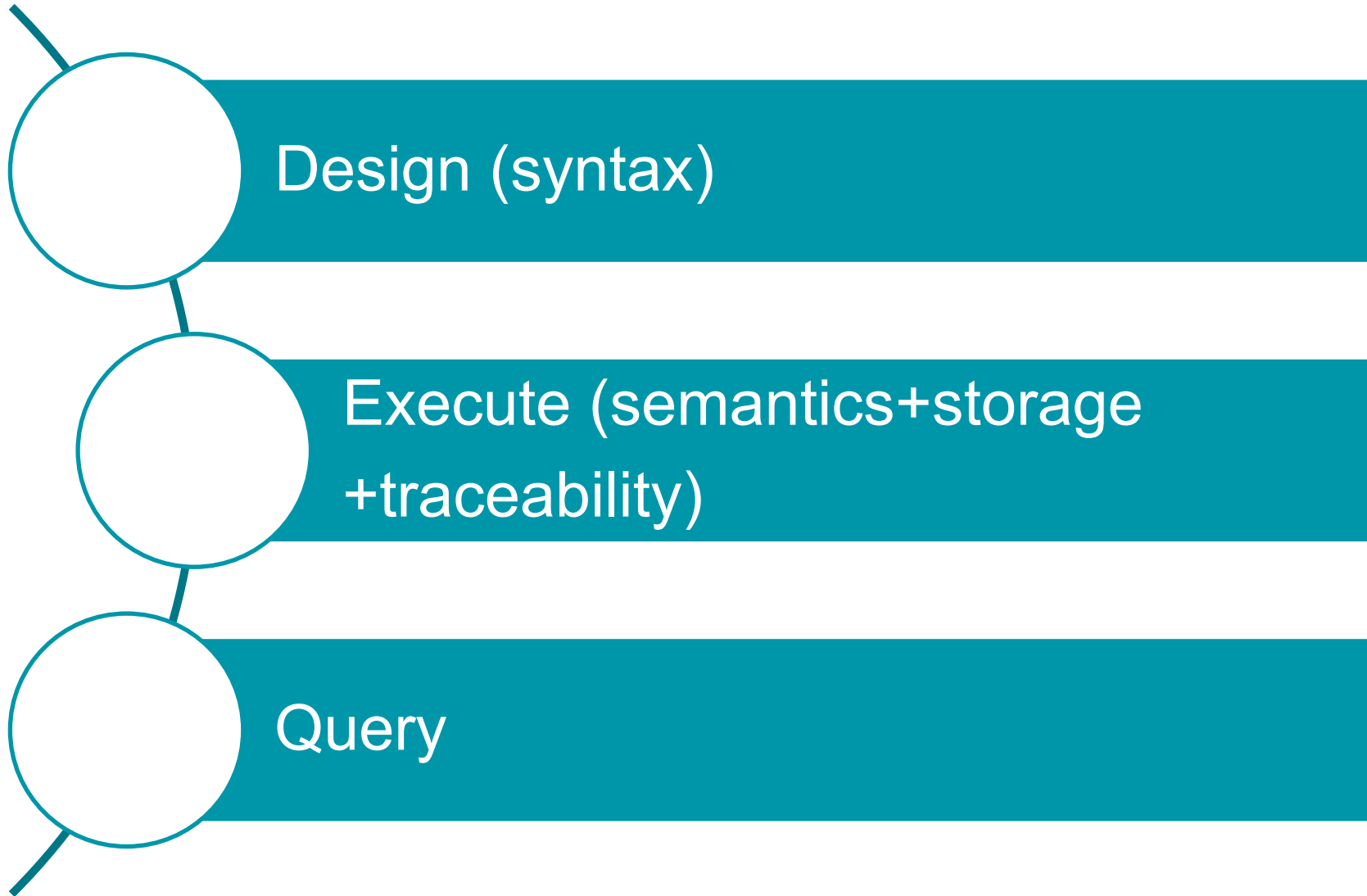
Workflow

Repeat

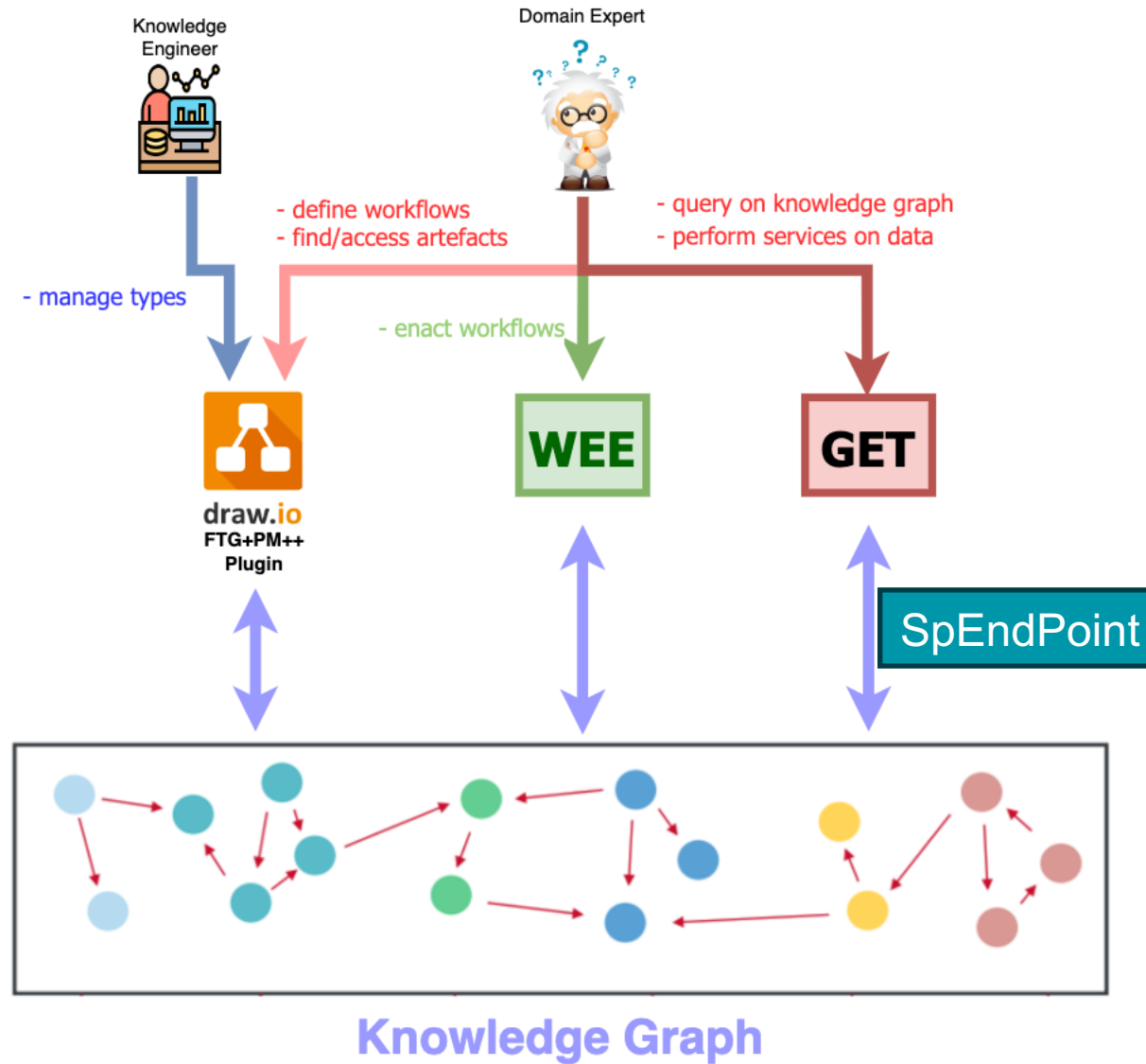
Replicate

Reason

Requirements



Goals – How do we accomplish it?



High-level Architecture

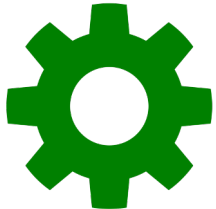
Type and Workflow Layer



draw.io

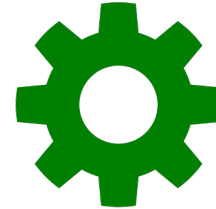


Rosetta

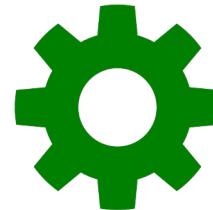


Enactment

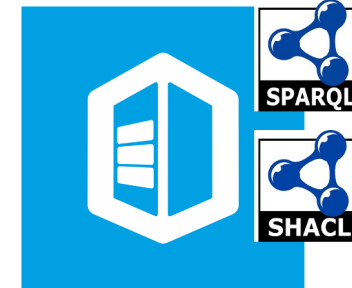
Services/Operation Layer



Services

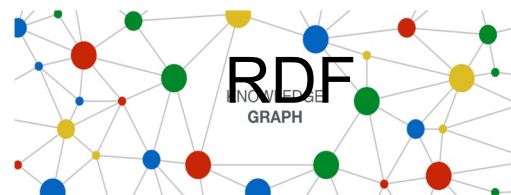


Data
Source
Operations

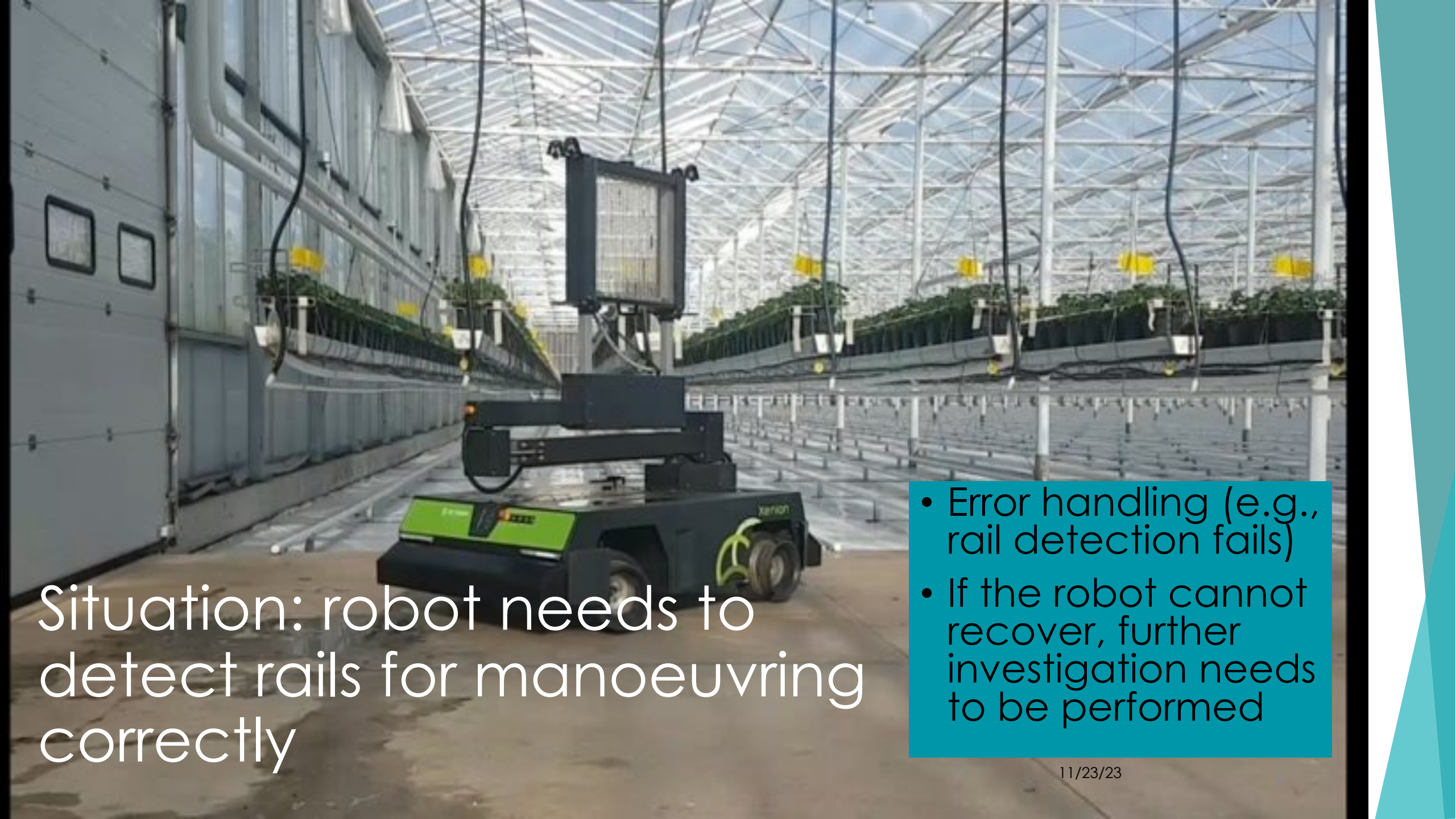


FUSEKI

Data Layer



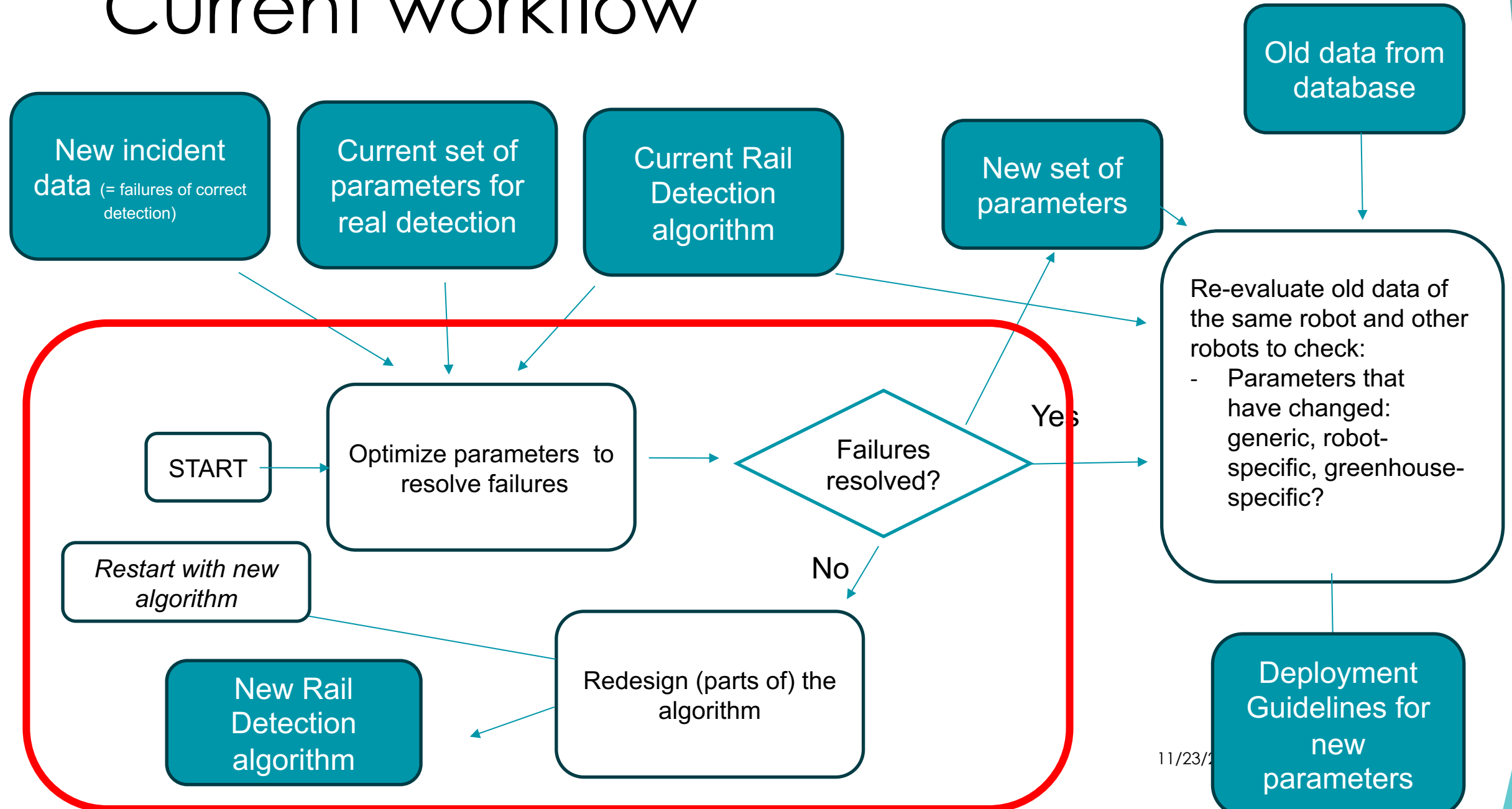
Data Source



Situation: robot needs to detect rails for manoeuvring correctly

- Error handling (e.g., rail detection fails)
- If the robot cannot recover, further investigation needs to be performed

Current workflow







FLANDERS
MAKE

DRIVING INNOVATION IN MANUFACTURING

Experiment workflow management

Lucas Lima

23 November 2023