



**CoSys-Lab**  
Constrained Systems Lab  
University of Antwerp

19/12/2018

# Valid deployment of Models-of-the-physics using Validity Frames

Bert Van Acker



**CoSys-Lab**  
Constrained Systems Lab  
University of Antwerp

06:45.900

NÜRBURGRING NORDSCHLEIFE  
**LAP RECORD**

GERMANY, MAY 12th 2017

02:40.33

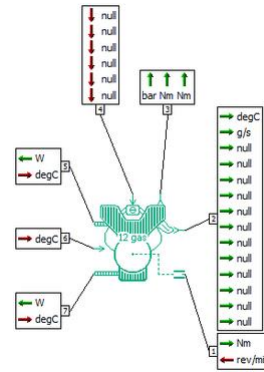
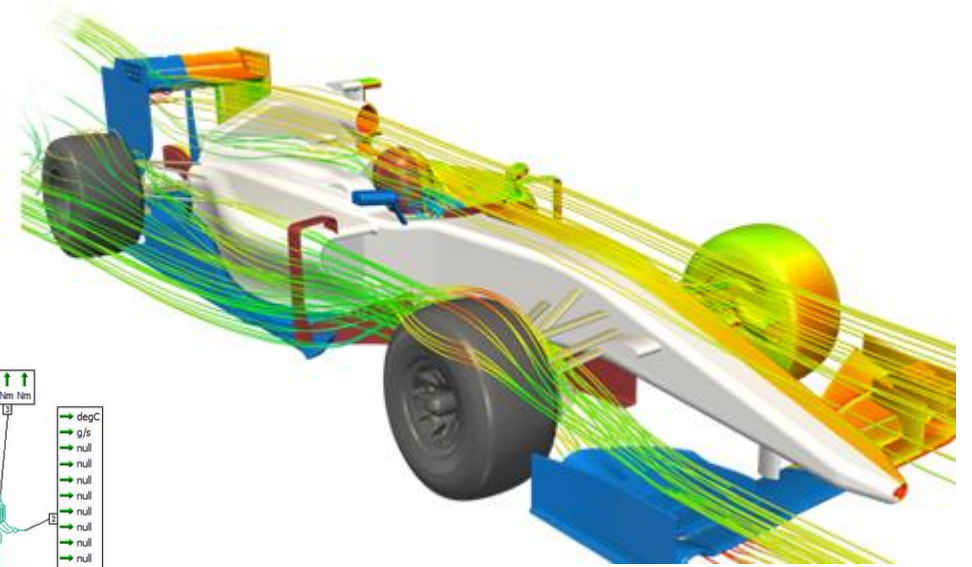
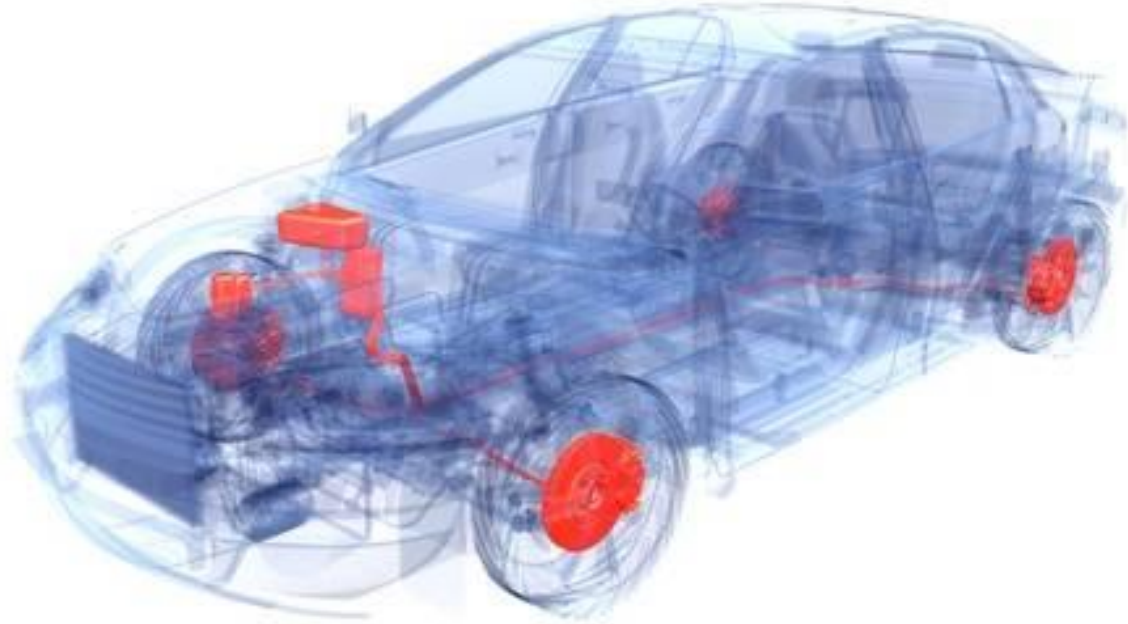
CIRCUIT OF THE AMERICAS  
**AUTONOMOUS LAP RECORD**

AUSTIN, TX. FEB 23rd 2017



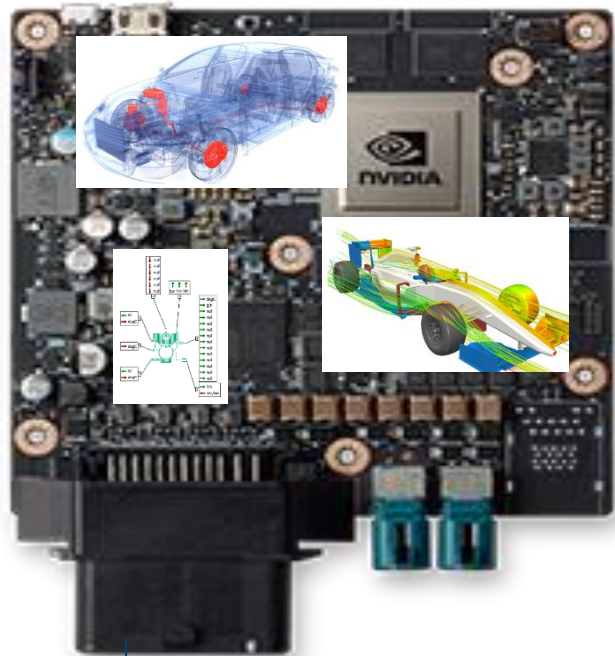
**Pushing the boundaries of Cyber-physical systems**

# Why?(What is the need)

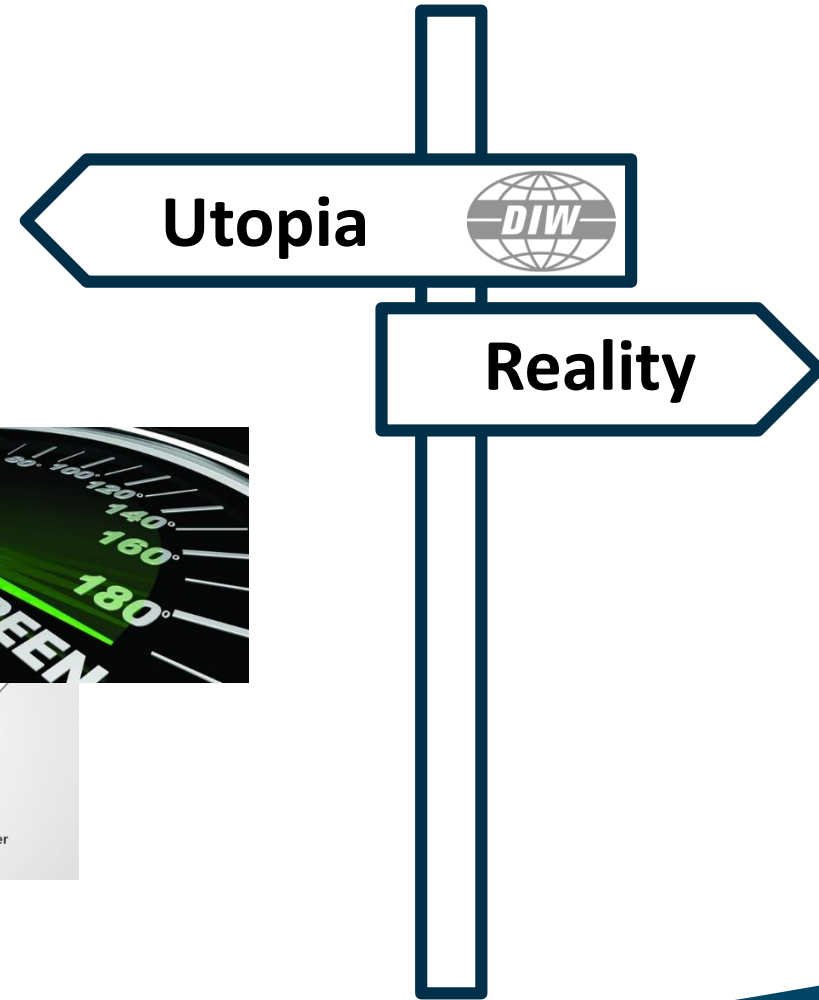
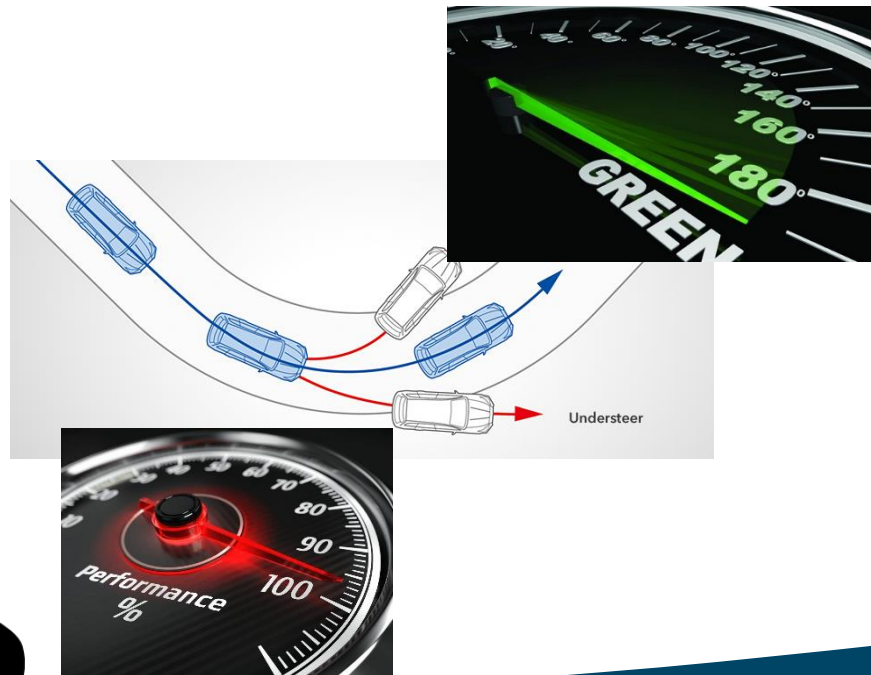


Embedded target

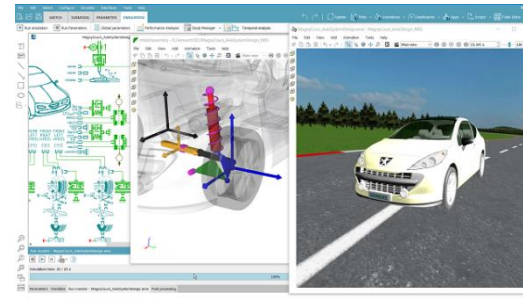
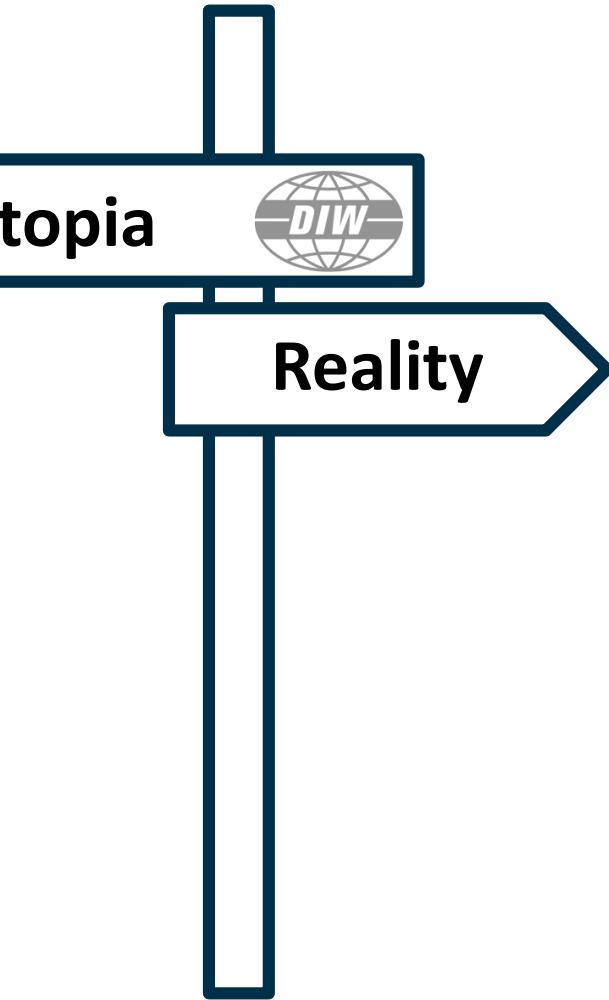
# Why?(What is the need)



Embedded target



# Why?(What is the need)

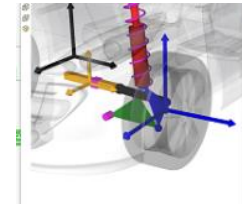


High-fidelity model

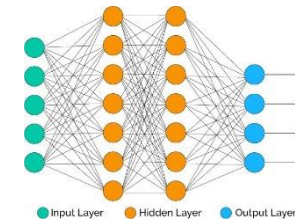
## Reductions/approximations

$$m_1 \ddot{x}_1 = -b_1 \dot{x}_1 - k_1 x_1 + k_2 (x_2 - x_1)$$
$$m_2 \ddot{x}_2 = -k_2 (x_2 - x_1) + k_3 (y - x_2) - b_2 \dot{x}_2$$

or



or



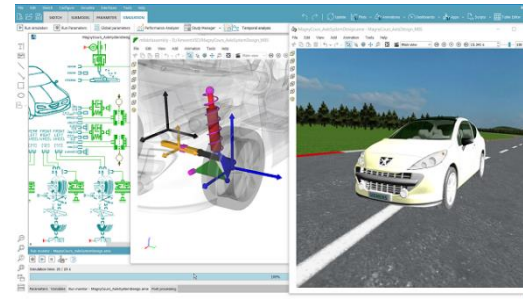
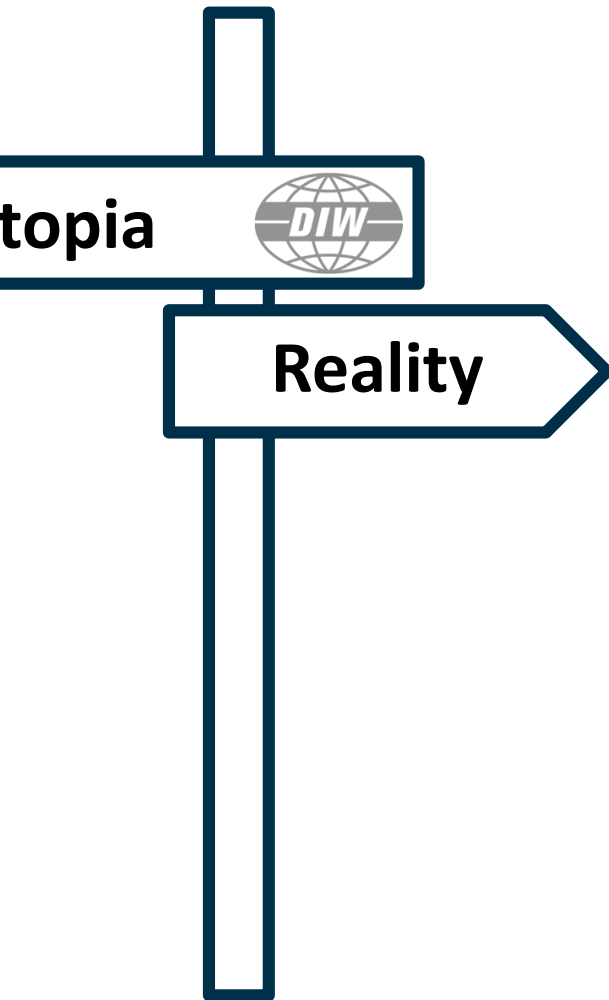
Or ...

### Constraint system

- > [MEM<sub>min</sub>, MEM<sub>max</sub>]
- > [COMP<sub>min</sub>, COMP<sub>max</sub>]
- > Hard real-time!
- > ...

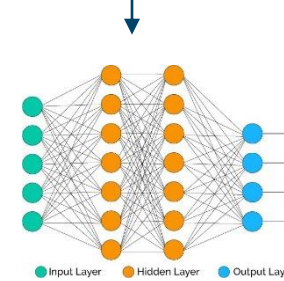


# Why?(What is the need)



High-fidelity model

Reductions/approximations



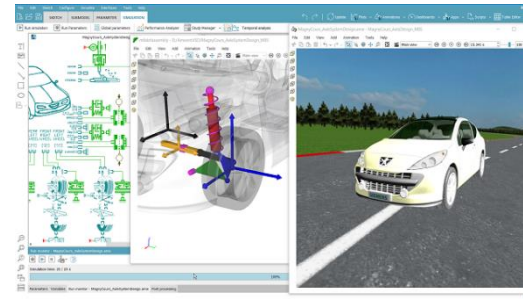
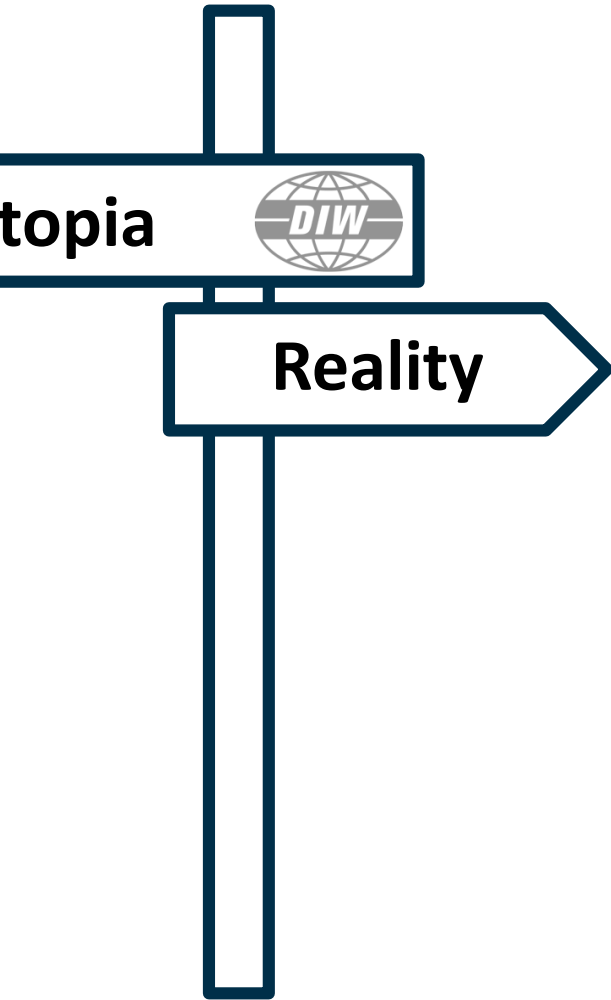
Discretization/fixed-pointing/...

## Constraint system

- >  $[MEM_{min}, MEM_{max}]$
- >  $[COMP_{min}, COMP_{max}]$
- > Hard real-time!
- > ...

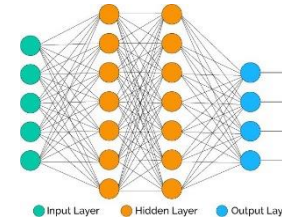


# Why?(What is the need)



High-fidelity model

Reductions/approximations



Discretization/fixed-pointing/...



## Constraint system

- > [MEM<sub>min</sub>,MEM<sub>max</sub>]
- > [COMP<sub>min</sub>,COMP<sub>max</sub>]
- > Hard real-time!
- > ...



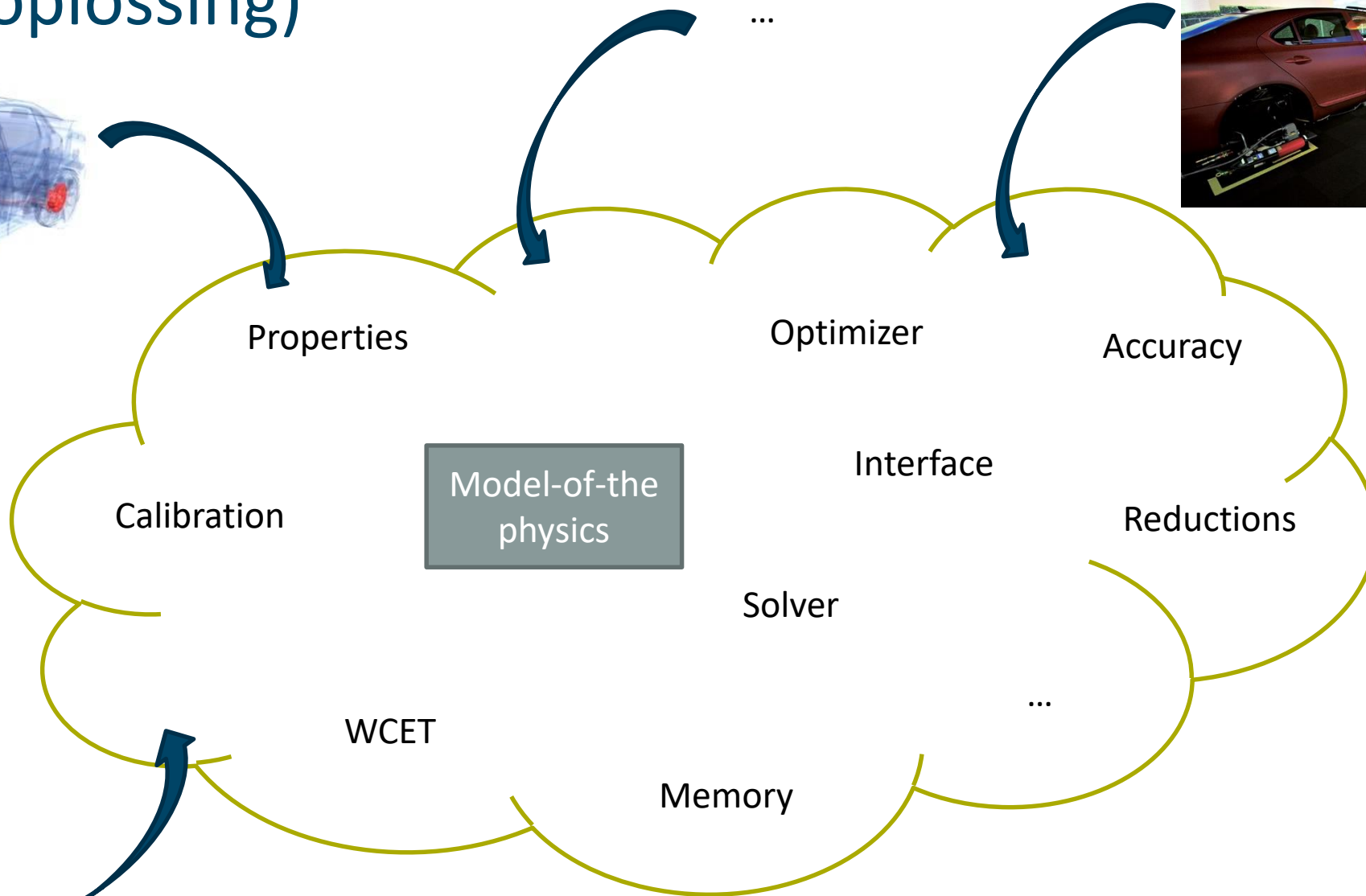
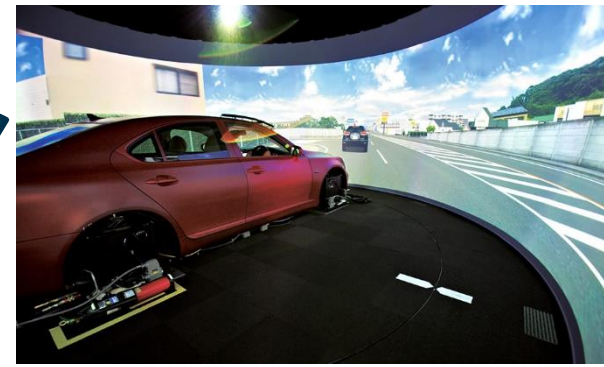
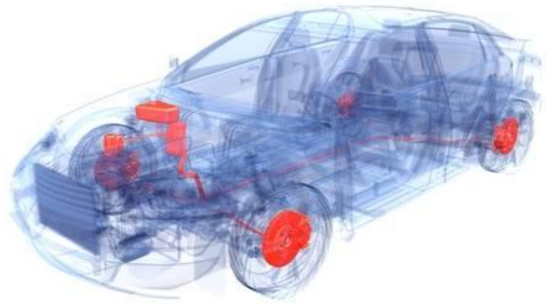
Properties?  
Valid range?  
Verify?

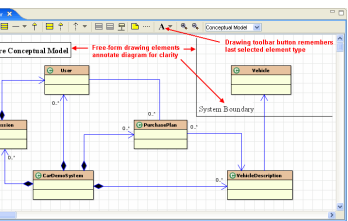


Properties?  
Valid range?  
Verify?



# What? (oplossing)

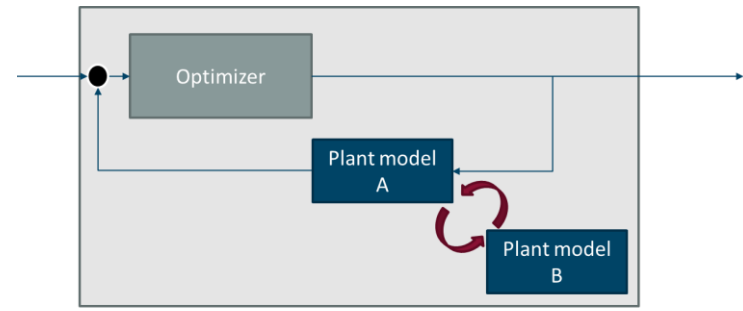




Property	Value
Data_Model	fixed
Integer_Range	10..50
DesignProperties	
Unit	cm

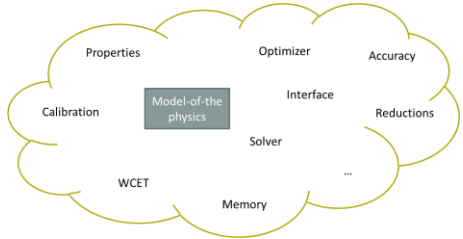


**Capture**



Adaptive real-time control systems

**Validity frame**



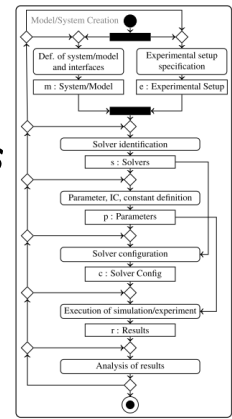
**Usage**



**Component (re-)usability**



Calibration processes  
 Experimenter processes  
 Integration processes



**Verify**



# Roadmap (evolution 5j.)

